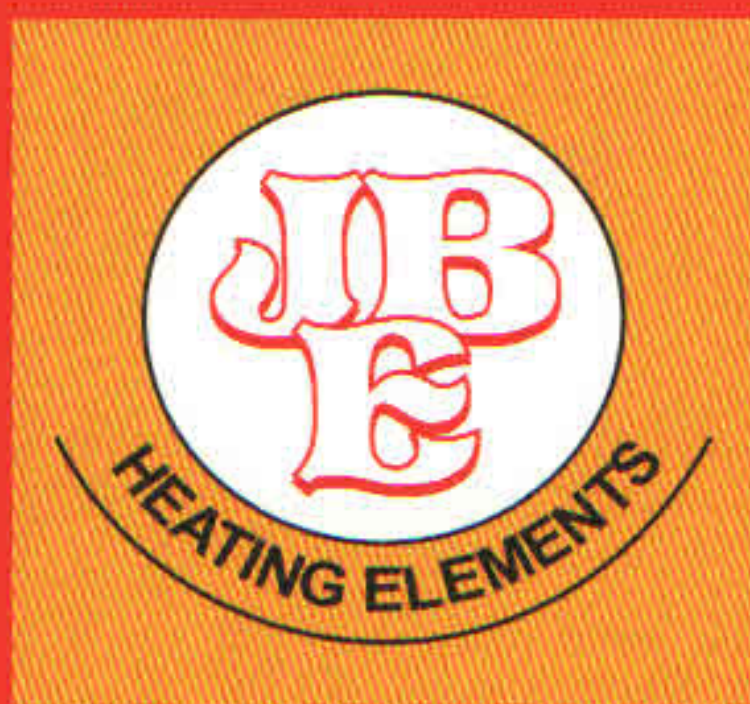
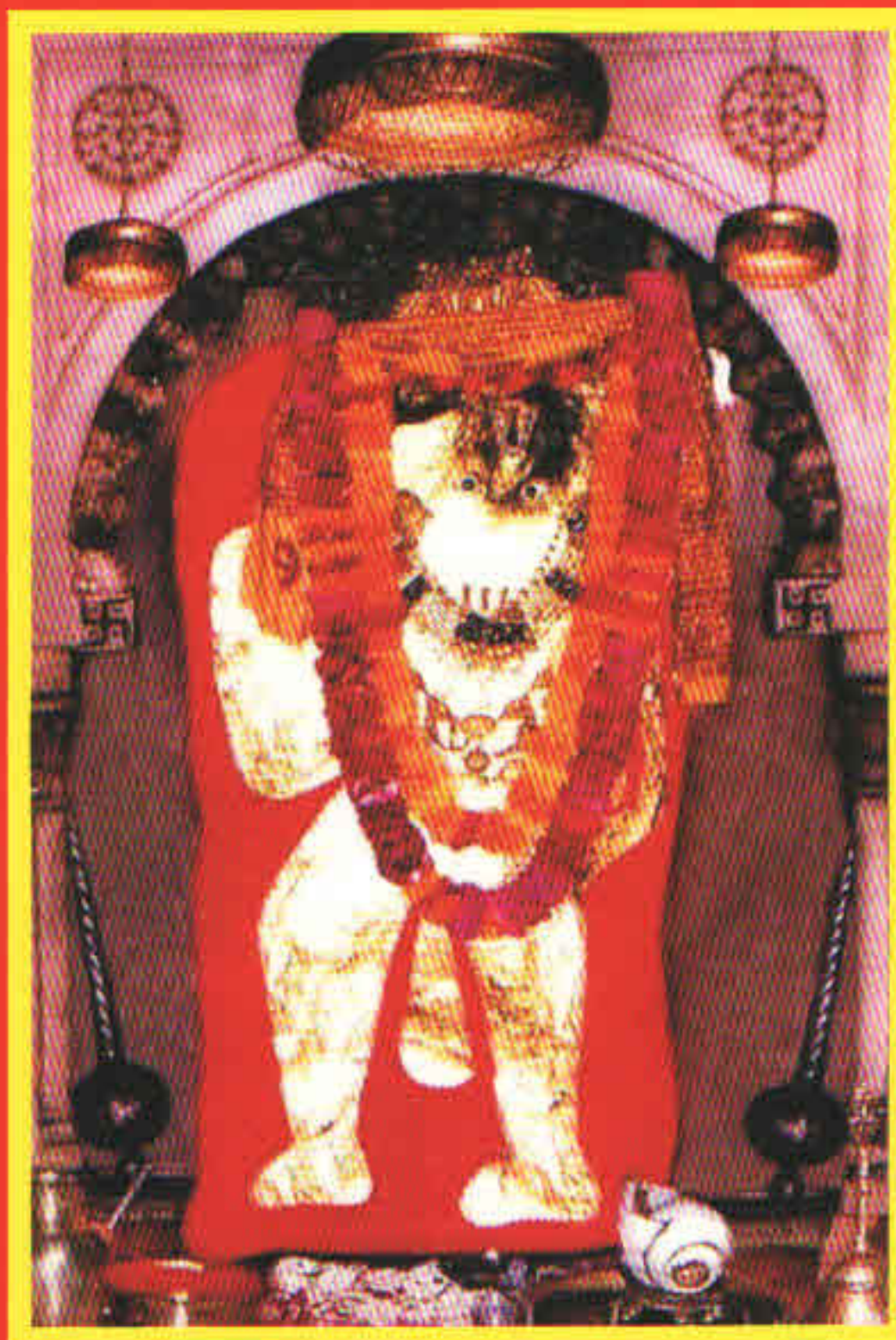


!! जय श्री राम !!



ISO-CERTIFIED

***Jai Balaji* ELECTRICALS**

Office : B-1/ A, Main Market, Main Wazirabad Road,
Bhajanpura, Delhi-110053

Ph. : +91 9810343115, +91 9810443115, 011-22197291

E-mail : jaibalajielectrical@gmail.com

Website : www.jaibalajielectricals.com,



Jai Balaji ELECTRICALS

DEALS IN ALL KINDS OF HEATING ELEMENTS

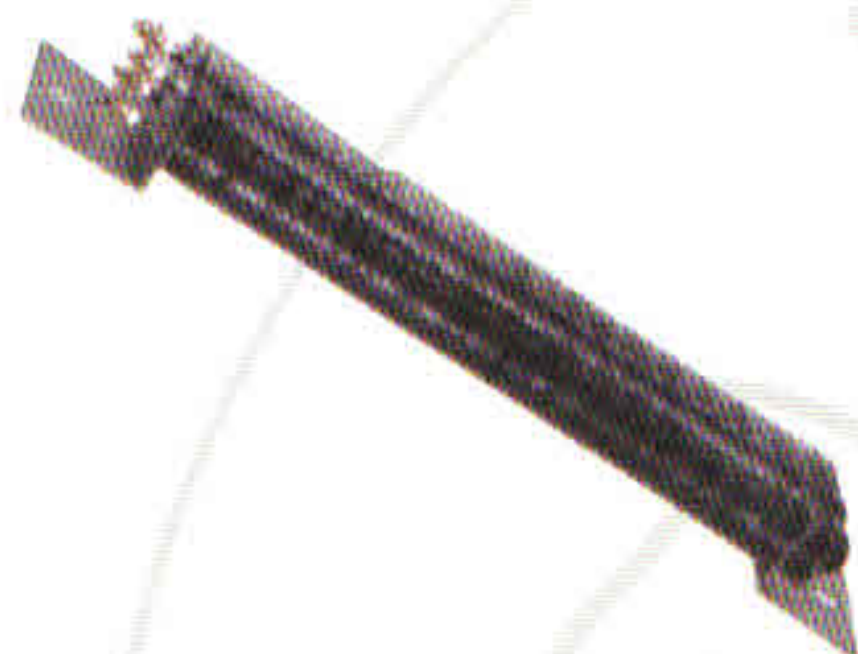


FINNED STRIP HEATER

Application : Air Conditioning, Textiles, Leather Drying Chambers, Stoving Paints, Heating-arrangements.

Installation: Within Forced Air Only In Horizontal Position.

Construction: These Heater Are Made From Stainless Steel, Gp Sheathing Having The Heat Resistance Chrome Nickle 80/20 Element Protected Under The Best Insulation To Avoid The Leakage Of Current And To Ensure The Long Life Of The Heater.



FINNED AIR HEATERS DOUBLE TUBE TYPE

Application: Air-conditioning, Electric Ovens, Gases, Hot Air Chambers

Installation: Within Forced Air With Thermostat In Any Position.

Construction: These Heaters Are Consisting Of Two Tubular Mineral Filled Incoloy 800/stainless Steel-321 Sheathed Element Dia 8mm, In One Unit G.p. Finns Are Provided For Quick Dissipation Of Heat. It Can Be Install In Any Position As Per The Requirement.



FINNED AIR HEATERS-M TYPE

Application: hot air chamber, equipment, duct heater, batteries, industrial process air heating, drying unit, decorative lehr.

Construction: continuous spiral ms/ss steel finns crimped to 11.00 mm dia. steel sheathed tubular element, dia. over finn 30mm.



AIR HEATERS "U" TYPE WITH OPTIONAL FINNS FOR BAKING CHAMBERS, OVEN ETC.

Construction: These Elements Are Made From High Temperature Resistance Chrome Nickle Steel Tube To Withstand A Surface Temp. Upto 600 C. Elements Are Provided With Two Adjustable Fixing Brackets.



HEATING UNIT FOR HOT WATER GENERATOR

Construction: This Element Is Made From Incoloy/stainless Steel/copper Sheathing, Brazed With M.s Flanges Suitable For Metting Flange. Elements Are Designed For 70 Watts/sg. Inch Max. Available In Different Wattage From 5kw To 300kw, 230/440 Volts. Ac Hz.



Jai Balaji ELECTRICALS

DEALS IN ALL KINDS OF HEATING ELEMENTS



INDUSTRIAL WATER IMMERSION HEATERS FOR HOT WATER GENERATORS, TANKS & BOILERS

Construction: This Element Is Made From Copper /S.S. Tube Brazed To Brass Flange And Duly Nickle Plated.



OIL IMMERSION HEATERS FOR OIL TANKS

Construction: This Element Is Made From Special Tube Brazed To M.s. Flange Provided With Thermostat Pocket. Used For Fuel Oil Heating, Oil Circulating, Oil Jacketting Etc.



ALKALINE/LEAD/CHEMICAL IMMERSION HEATERS

Alkaline: These Heaters Are Used For Alkaline Cleaning Solution, Citrus Juices And Very Mild Acid Baths Not Corrosive To Stainless Steel Sheet.

Lead: These Heaters Are Used For Nickle Or Chrome, Plating Baths And Sulphuric Acid Solution Having Not More Than 10% Concentration.

Chemical: These Heaters Are Used For Plating Batch Such As Nickle, Chrome, Gold, Silver Including Ferric And Iron Chloride Solution Bright Dips And Nickle Containing Nigric, Phosphoric And Chromic Acids, Nitrates, Permaganates, Persulphats.



BOBBIN STAINLESS STEEL/LEAD COVERED/SILICA TUBE/GLASS HEATERS FOR CHEMICAL TANKS

Construction: These heaters are rewirable type and inserted in the tubing of lead/glass/silica/titanium/stainless steel etc. its terminals are covered with cap. fitted with flange.





Jai Balaji ELECTRICALS

DEALS IN ALL KINDS OF HEATING ELEMENTS



TITANIUM SHEATH CASTED HEATER

Construction: These heaters are mineral filled and casted in imported titanium tubes for long life of heaters. they are specially designed for easy installations having sealed heavy terminal box to prevent from moisture and fumes. these should be dipped inside the chemical upto red mark.



DEFROST HEATERS/DOOR/DRAIN HEATER

Application: Cold Storage Doors, Drain Pipes Etc.

Construction: The element of nickle 80/20 is wrapper on fiber thread then insulated by teflon coating and then braided by stainless steel wire.



CERAMIC BAND HEATERS WITH SS COVERING

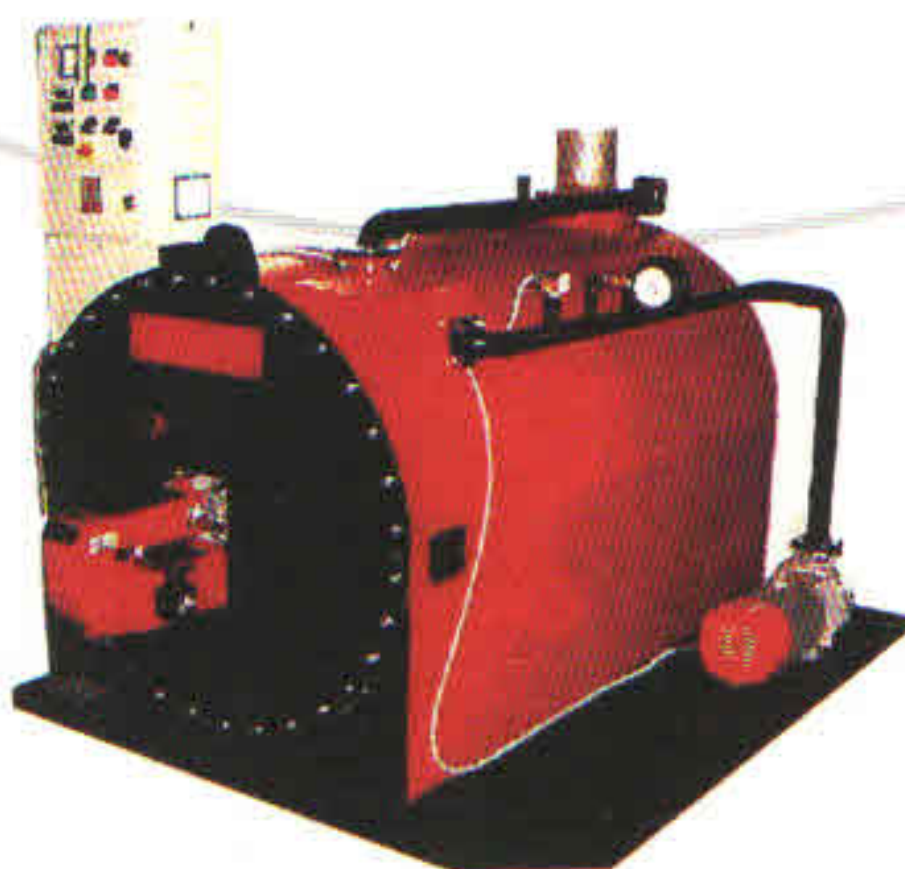
Construction: These Heaters Are Designed To Achieve Energy Conservation By Using Thick Ceramic Fibre Insulating Blankets On Surface Increasing The Over All Outer Diameter. Power Consumed Upto 30% Less Because Of Low Thermal Consuctivity Of The Ceramic Fib, Insulation, The External Surface Temp. Of The Insulation Plus Band Heaters Are Approc. 800 C While Running The Inside Surface Temp. At 300 C.

We Have Also Deals in RAPID COOL Make Products

Electric Hot Water Generators



Gas/Oil Fired Hot Water Generators



Ultrasonic Humidifiers

